



NBEE

The World's Fastest Dental 3D Printer

5

PRINT

MINUTES

6

DENTAL MODELS



FABDENT™

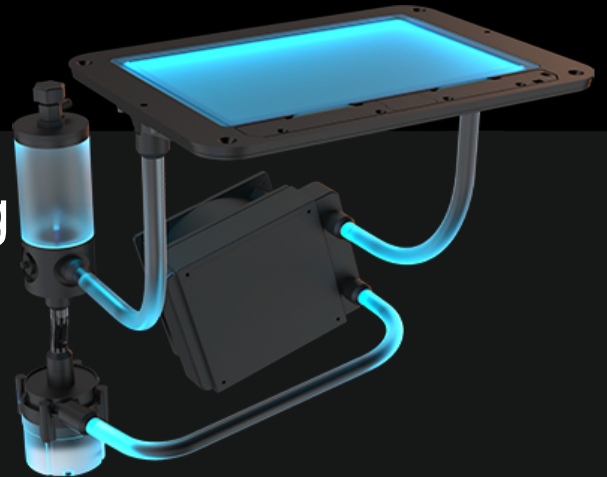
DIGITAL DENTAL TECHNOLOGY

1300 878 336

Features

High Efficiency Liquid Cooling

Maintains System Temperature Below 40°C
Prolong LCD Life over 5000 Hours

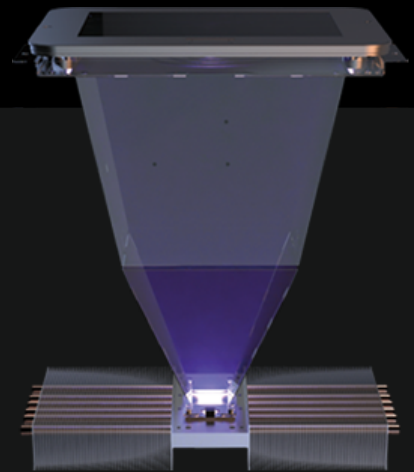


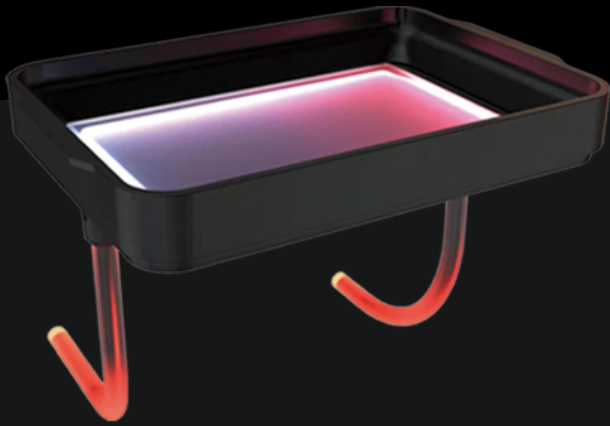
Micro-Stereo Composite Film

Patent Pending Low Force Stereo Peel Technology

High Power Collimated Light Source

12 mw/cm² High Power, 95% Uniformity





Resin Temperature Control System

Maintain Optimal Reaction Temp

Anticoll High Performance Server

Closed-loop Motor Control for High Precision Peeling



Redefine the Digital Dentistry

UNIZ is proud to introduce the NBEE to the orthodontic community to meet the needs of industry leaders requiring advanced tools for treatment planning. With speed, accuracy, and reliability, the NBEE has all the killer features to make extraordinary strides in the dental market. The NBEE provides oral and dental specialists with unfathomable precision, effective work flow and easy adaptation in digital dentistry.

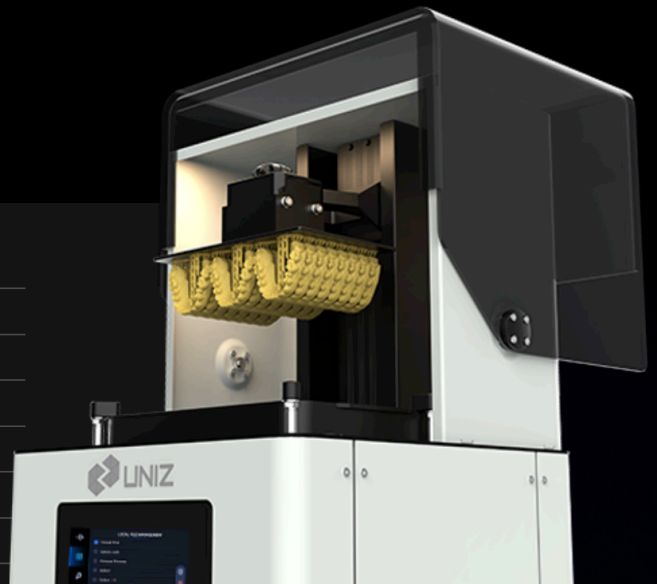


Watch This Video



Specifications

Printing Technology	Liquid Cooling LCD Stereolithography
Build Volume	192 × 120 × 180 mm 7.5" × 4.7" × 7.1"
XY Resolution	50 μm
Maximum Accuracy	±0.05 mm
Layer Thickness(Z Resolution)	0.025-0.15 mm
Separation Mechanism	Micro-Stereo High Speed Peel
Optical System	High Uniformity Collimate Light Engine



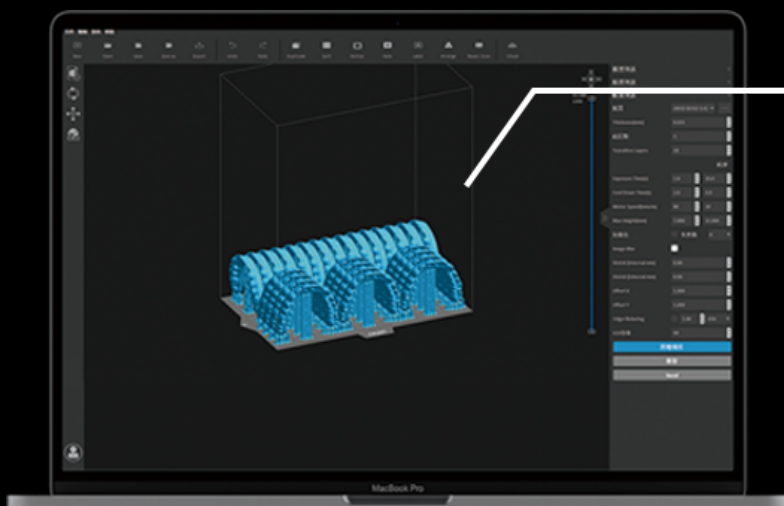
Materials



About 3 Party Resins

The new UNIZ NBEE high speed dental printer iOS compatible with many 3rd party resins. However to achieve high speed results it is recommended to use genuine UNIZ resins.

Software



World's Fastest Slicing Software, 26 full plate models can be sliced and saved in 12 seconds (Computer Dependent)

- Advanced Scan Basing and Repair
- Auto Arrangement
- Hollowing
- Text Embossing

Pricing

UNIZ NBEE Supply printer for self install.
Remote setup and training supplied \$14,995

UNIZ NBEE Supply and Install 1 day training onsite
(Some states may incur extra charges) \$16,995

1/2 day Training at Fabdent in Sydney \$ 600

Delivery costs and GST are not included

Full terms and conditions of sale are on
our website www.fabdent.com.au



FABDENT™
DIGITAL DENTAL TECHNOLOGY

1300 878 336

www.fabdent.com.au

Full Specification

Printing Technology	LCD Stereolithography
Separation Mechanism	Natural peel with specially engineered polymer film Up to 100x more durable than PDMS
Build Volume	192 × 120 × 180mm.
XY Resolution	49.8µm
Layer Thickness (Z resolution)	10 to 200microns. 25,50 and 100 recommended Variable and customisable
Separation Mechanism	Stereo-Polymer Multi Layer Film Peel
Support	UNIZ Smart Support Technology
Printing Speed	Up to 280mm per hour
Dimension	380 x 380 x 1230 mm (W x D x H.)
Weight	45 kg
Operating temperature	18-28 C
Power	220V 3A
Optical System	4th Generation Collimated Light
Connectivity	USB FlashDrive, WiFi, Ethernet
Control Panel	7" LCD Touch Screen
Software Requirements	Windows 7 64 Bit and above, Mac OS X 10.7 and above 16 GB RAM Discrete Graphics, OpenGL 2.1
File format compatibility	STL, OBJ, AMF, 3MF
Slice Format	zslr



FABDENT™
DIGITAL DENTAL TECHNOLOGY

1300 878 336

www.fabdent.com.au